

## Instructions for installing new style landing light

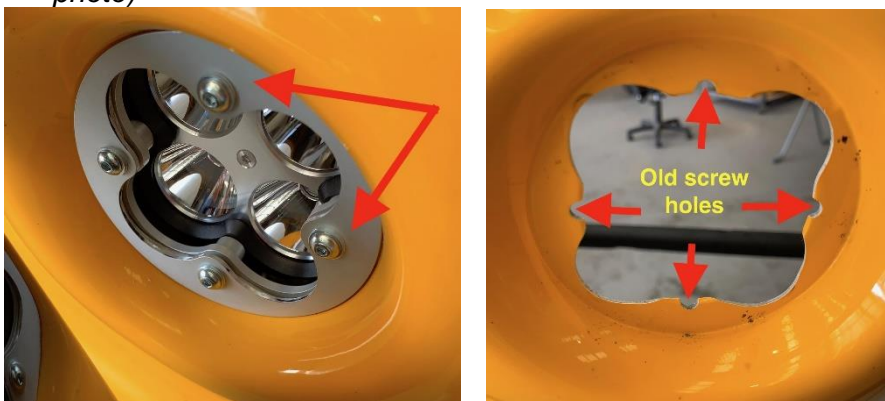
*(replacing old style)*

These instructions are intended to give a guide to replacing the old-style circular LED landing light with the newer '4-leaf clover' style LED light.

Tools you'll need:

- screwdrivers to remove the mount screws on both lights
- drill with bits suitable for drilling composite material
- drill or Dremel with circular sanding wheel
- side cutters to remove cable ties

1. Remove the top engine cowling. Disconnect the landing light cable.
2. Unscrew and remove the lower engine cowling and place on a suitably cushioned bench to avoid damaging. Remove the old light by taking out the 4 screws.
3. Using one of the two metal mount plates supplied with the new light, mark with a felt pen the cowling where the light mounts in the shape of the '4-leaf clover'. Align the shape so that the old screw mounting holes are between the main 'arms' of the 4-leaf clover. (see *photo*)



1. Sand out the shape of the new landing light with a Dremel or similar and ease out the old screw mounting holes into a U-shape, to align with the new mounting screws. (see *photo*)
2. Place the flat metal plate from the new landing light on the front/outside of the cowling and insert the screws from the front. (see *photo*)

Place the stepped metal plate from the new landing light over the screws inside the cowling, with the step facing away from the cowling. Add the four spacers over the screws on the inside of the cowling. (see *photo*)



Position the new landing light inside the cowling and insert and tighten the 4 screws, ensuring the spacers seat properly in the light indentations. There should be a clear gap between the light unit and the cowling, to ensure correct cooling. (see photo)

Note – the retro-fitting of the new light will look different from the factory OEM installation due to the different landing light holes in the cowling (see photo of red factory-fit aircraft for comparison)



1. Replace the lower cowling, ensuring the screws are suitably tight
2. Route the landing light cable away from the exhaust and secure with cable ties as needed. Reconnect the landing light plug and check the light functions correctly.
3. Replace the top cowling, engaging the camlocs correctly.